

"C" 1-Light Strip



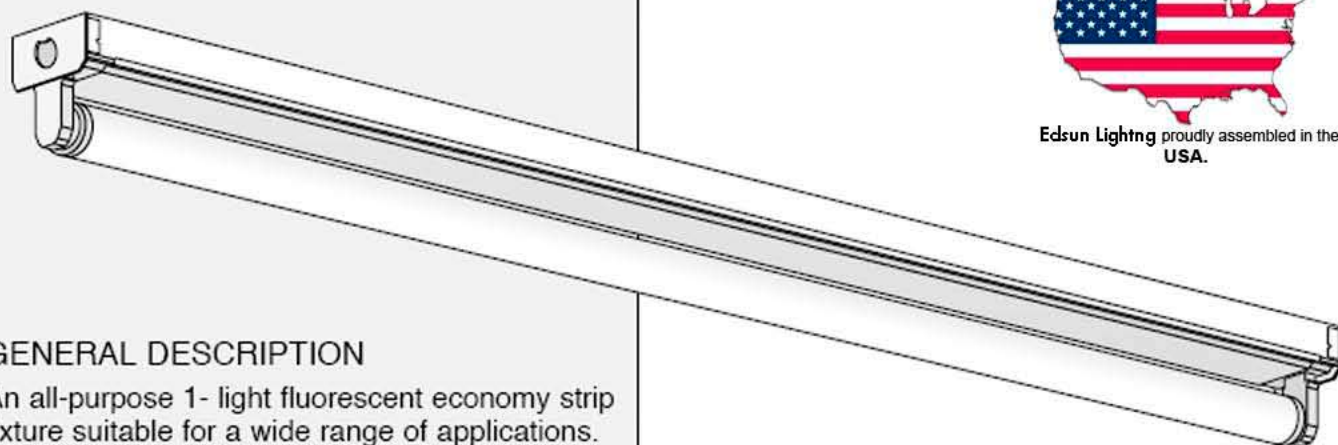
"Fluorescent & HID"

EDSUN
LIGHTING
FIXTURE Mfg

Committed to Quality!



Edsun Lighting proudly assembled in the
USA.



GENERAL DESCRIPTION

An all-purpose 1- light fluorescent economy strip fixture suitable for a wide range of applications. All fixture parts snap together for ease of installation and maintenance. Side knockouts are included for convenience outlet, pull switch and conduit.

SPECIFICATIONS

Housing: Die-formed 21-gauge cold rolled steel.
Cover: Snap-on type to simplify installation. Two covers are used for 30-watt tandem and 40-watt tandems.

Ends and Socket Plates: Snap-in type. Ends also function as coupler for continuous row mounting. Socket plates accept slide-on or screw-down sockets.

Finish: Phosphate coating-baked white enamel with 85% reflectivity.

Mounting: Fixtures designed for surface, chain and stem hanging. Can be installed as individual units, in continuous rows or in conjunction with other housings.

Also available with electronic ballasts: T5 and T8

C117, CT5114, C124HO (24")

C125, C121, C139HO (36")

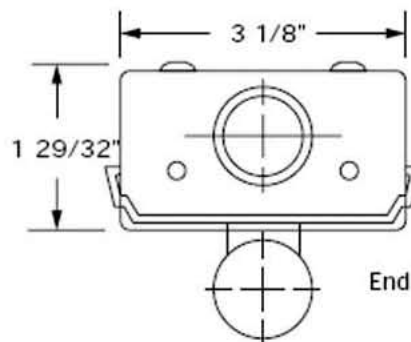
C132, C128, C154HO (48")

C2125 (72") and C2121, C2139HO Tandems.

C2132 (96") and C2128, C2154HO Tandems.

EM=Emergency battery

Call for desired voltages.



End View: "C" 1-Light Strip

ORDERING INFORMATION



Catalog No.	T12's	Lamps	Length
C114		1	15"
C115		1	18"
C120		1	24"
C130		1	36"
C2130	Tandem	2	72"
C140		1	48"
C2140	Tandem	2	96"

LED 120V-277V

C117LED	1	24"
C132LED	1	48"
C2132LED	2-4' Tandem	96"

All made for **UL Listed** lamps ONLY. Internal driver 120-277V.

NOTES

Dimensions subject to change without notice.

569 W 17 St., Hialeah, FL 33010-2412 PH: 305-888-8849 • Fax: 305-883-0005
e-mail: sales@edsunlighting.com